

WINTER PRICES 2026/2027

Rooms & Apartments	Standard occupancy Sofa bed	Start 03.12. - 17.12.2026	Low Season 09.01. - 22.01.2027 13.03. - 19.03.2027 30.03. - 04.04.2027	Top Season 18.12. - 01.01.2027 06.02. - 26.02.2027	High Season I 02.01. - 08.01.2027 23.01. - 29.01.2027 20.03. - 29.03.2027	High Season II 30.01. - 05.02.2027 27.02. - 12.03.2027	Final Cleaning
Double room „Sterntaler“ <i>incl. breakfast ca. 30 m²</i>	2 1	212	250	340	299	334	-
Double room „Mondschein“ <i>incl. breakfast ca. 26 m²</i>	2	218	257	347	306	340	-
Junior Suite „Edelweiss“ <i>incl. breakfast ca. 32 m²</i>	2 1-2	222	262	353	312	347	-
Apartment „Sattelkopf“ <i>ca. 70 m²</i>	4 1	356	421	570	507	559	160
Apartment „Komperdell“ <i>ca. 70 m²</i>	5	367	435	587	523	575	160
Apartment „Süd 1“ <i>ca. 63 m²</i>	4	356	421	570	507	559	160
Apartment „Plansegg“ <i>ca. 54 m²</i>	4	333	395	533	474	522	160
Apartment „Bifang“ <i>ca. 52 m²</i>	4	277	329	442	394	434	150
Apartment „Alpina“ <i>ca. 85 m²</i>	5	439	520	702	625	689	170
Apartment „Süd 2“ <i>ca. 90 m²</i>	6	478	562	751	671	737	170
Apartment „Serfaus“ <i>ca. 94 m²</i>	5	424	503	679	599	666	170

INFORMATION

The prices are in Euro.

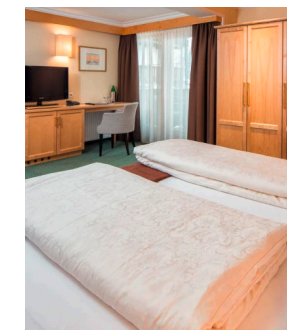
Room prices are per double room and per day with standard occupancy incl. breakfast and excl. local tax (€ 3.70 from the year 2012).

Reduction for children in a double room with 2 full-paying adults: 0-2 years: free, 2-5 years: 70 %, 6-12 years: 50 %, from 12 years: 30 %

Apartment prices are per apartment and per day with standard occupancy excl. local tax and final cleaning (one-off) / additional person on the sofa bed € 60.00 and crisp € 35.00 per day.

Breakfast bookable: € 22,00 for adults from 15 years, € 11,00 for children from 6-14 years, free of charge for infants from 0-5 years.

Dog fee € 200,00 - only on request.



EXTENSION

WINTER PRICES 2026/2027

Rooms & Apartments	Standard occupancy Sofa bed	Start 03.12. - 17.12.2026	Low Season 09.01. - 22.01.2027 13.03. - 19.03.2027 30.03. - 04.04.2027	Top Season 18.12. - 01.01.2027 06.02. - 26.02.2027	High Season I 02.01. - 08.01.2027 23.01. - 29.01.2027 20.03. - 29.03.2027	High Season II 30.01. - 05.02.2027 27.02. - 12.03.2027	Final Cleaning
Apartment „101/201“ ca. 72 m ²	4 2	432	512	691	611	678	160
Apartment „102/202“ ca. 70 m ²	4 1	432	512	691	611	678	160
Apartment „103/203“ ca. 70 m ²	4 2	424	503	679	599	666	160
Apartment „104/204“ ca. 84 m ²	6	546	646	873	770	857	170
Apartment „105/205“ ca. 80 m ²	4 2	424	503	679	599	666	160
Apartment „301/401“ ca. 70 m ²	4	440	521	703	622	691	160
Apartment „302/402“ ca. 72 m ²	5	455	538	727	642	713	160
Apartment „303/403“ ca. 62 m ²	5	420	499	671	593	659	160

INFORMATION

The **apartment prices** are in euros per apartment and per day with standard occupancy excluding local tax (€ 3.70 from the year 2012) and final cleaning (one-off).

Additional person on the sofa bed € 60.00 and crisp € 35.00 per day.

Underground car park: The underground car park is designated for apartments 101 to 403. An outdoor car park is available for the apartments in the main building.

Dog fee € 200,00 - only on request.

Breakfast bookable: € 22,00 for adults from 15 years, € 11,00 for children from 6-14 years, free of charge for infants from 0-5 years.

